

DALI USB



Datasheet

DALI USB Interface

Communication interface between
PC and modules in a DALI lighting
system

Art. Nr. 24138923

DALI USB Interface

Overview

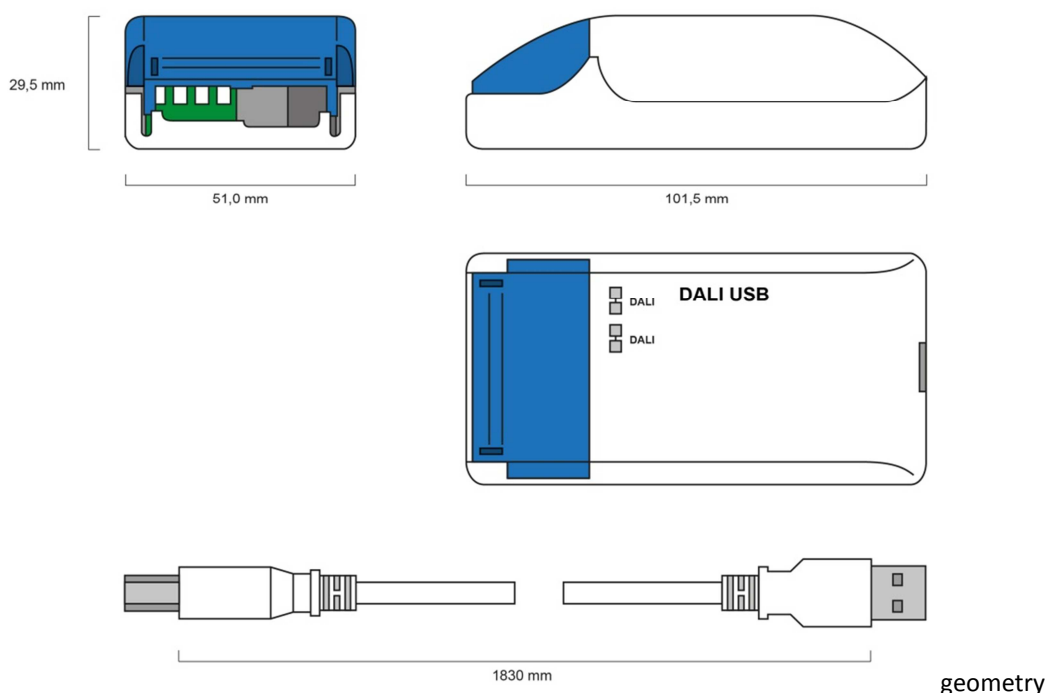
- Communication interface between DALI systems and PC applications
- bidirectional data transfer
- The DALI USB is generally applicable to address and configure DALI components. It can be used for status requests and parameter setting as well.
- Standard DALI protocol and various extended DALI protocols are supported
- monitoring of DALI-communication
- USB and DALI-line are electrically isolated
- supply via DALI-line and USB interface
- The „DALI Cockpit“ configuration and monitoring software is for free

Specification, Characteristics

Type	DALI USB
article number	24138923
geometry LxWxH	102x51x30mm
USB cable	1,8m
typ. current consumption	DALI: 6mA, USB: 10mA
ambient temperature	0°C-50°C
protection class	IP20

Supported protocols:

- Standard DALI (16Bit)
- Standard DALI (8Bit), backchannel
- eDALI, special Tridonic protocol (25Bit)
- NEMA DALI, 24Bit (NEMA Std. Publikation 243-2005)
- 17Bit DALI, special Helvar protocol
- DSI on DALI Bus (16Bit and 8Bit), signal is low for 10ms before and after sending a DSI-frame



Connection and Electrical Specification

The DALI-line and the USB are electrically isolated (6mm) by the use of optocouplers. Therefore the DALI USB has to be supplied by the DALI-line¹ (current consumption ~6mA) as well as by USB (current consumption 10mA max.). The connection to the DALI-line is polarity free and protected against overvoltage of up to 270Vac.

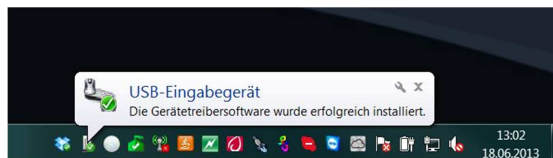
USB, Firmware Update and Windows-Installation

The USB-interface has the following properties:

vendor ID	17B5h (Lunatone Industrielle Elektronik GmbH)
product ID	0020h
USB current consumption	10mA max.
speed	full speed USB device (12MBit/s max.)

The DALI-USB firmware will be updated automatically via USB by the DALIBusServer.exe. This program is part of the „DALI-Cockpit“-software-package.

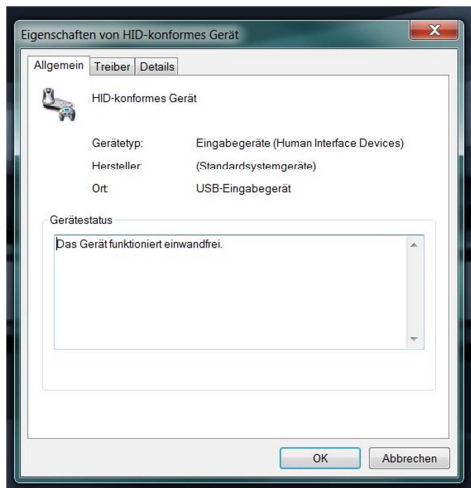
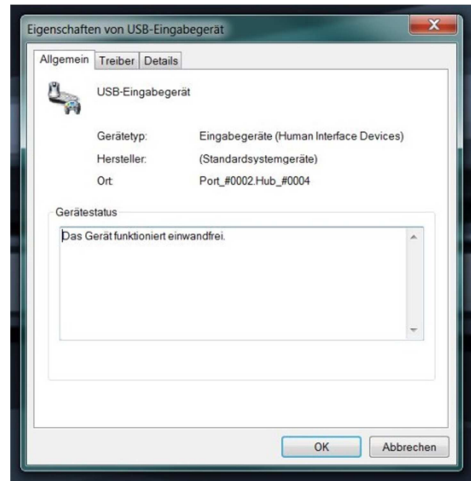
The DALI USB is implemented as USB HID (Human Interface Device).



A driver installation is not necessary due to the windows-integrated built-in support for human interface devices. The DALI USB will be detected by the operating system and all required drivers will be installed

¹ for the supply of all DALI-components on a DALI-line a DALI PS is necessary

automatically. After the installation process is finished successfully you can find the entry under the node HID (Human Interface Devices) in the device manager.



Supported DALI Specifications and Operating Modes

The DALI USB module supports the following protocols:

- standard DALI (16bit)
- standard DALI (8bit), backchannel
- eDALI, special 25bit Tridonic protocol (24bit data)
- NEMA DALI, 24bit corresponding to NEMA standard publication 243-2005

- 17bit DALI, special DALI-frame used by Helvar
- DSI on DALI Bus (16bit and 8bit), signal on DALI-line is low 10ms before and after sending a DSI-frame

The DALI USB-interface supports the transmission of DALI-commands as well as monitoring functions for DALI-communication. During monitoring mode each DALI-command on the DALI-line that corresponds to the supported protocols will be transmitted to the PC.

Application

The „DALI-Cockpit“ software package from Lunatone is a configuration and monitoring tool for DALI-systems. It is free of charge.

For more details check the instruction manuals of DALI USB, DALI-Cockpit and the Lunatone DALI-Tutorial.

A Windows developer kit for DALI USB access is available for software development.

Additional Information and Equipment

DALI-Cockpit – free configuration tool from Lunatone for DALI-systems
<http://lunatone.at/en/downloads/Lunatone-DALI-Cockpit.zip>

Windows developer kit for DALI USB
<http://lunatone.at/en/downloads/DALIDevKit30.zip>

DALI Tutorial – short introduction describing the structure and fundamental principles of DALI systems. Using the DALI cockpit the configuration of groups and scenes are shown as well as configuration and parameter settings of various Lunatone DALI components.
<http://lunatone.at/de/downloads/Lunatone-DALI-Tutorial-EN.pdf>

DALI-Manual http://www.dali-ag.org/c/manual_gb.pdf

DALI PS – power supply for a DALI line
<http://lunatone.at/en/downloads/Lunatone-Art24033444-DALI-PS-Datasheet-EN.pdf>

Contact:

Technical Support: support@lunatone.com

Requests: sales@lunatone.com

www.lunatone.com

